



web-site: [www.copa.co.il](http://www.copa.co.il)  
e-mail: [copa@copa.co.il](mailto:copa@copa.co.il)

כומפניקס תקשורת ואלקטרוניקה בע"מ

רח' צבי ברגמן 8, סגולה, פתח-תקווה

טל: 03-9049004 פקס: 03-9344497

ח.פ. 512109968

מספר ספק משרד הביטחון: 83524121

**MODEL NUMBER: 18008**

## Coaxial over VDSL2 Converter



RP-VC102C is a Cable LAN Extender providing a broadband transmission up to 100/60Mbps for downstream/upstream over coaxial cable for point-to-point Ethernet connectivity. With 100/60Mbps data rate, RP-VC102E supports transmission distance up to 300 meters and 30/10 Mbps for 1km long range connection. Users may also select a fixed data rate or a fixed SNR margin for different coaxial cable ranging.

With plug and play features and minimum installation time, a pair of RP-VC102C offers a cost effective solution for bandwidth-hungry applications such as video streaming and FTTB over single coaxial cable.

## Feature

- Compliance with ITU-T G.993.1, G.993.2 VDSL/VDSL2 and SG15Q4 DMT
- 100/60Mbps Down / Up Stream for distance up to 300 meters
- Trellis Coding support up to 1024 Discrete Multi-Tone (DMT) bin
- Supports Cable connection up to 2000 meter
- Selectable Fast and Interleaved modes
- Selectable fixed data rate and fixed SNR margin
- Auto MDIX for 10/100Base-T Ethernet LAN Ports
- 4 Dip Switches for Master/Slave Configurations
- Low-Latency for Video/Voice/Data applications



# כומפניקס תקשורת ואלקטרוניקה בע"מ

רח' צבי ברגמן 8, סגולה, פתח-תקווה

טל: 03-9049004 פקס: 03-9344497

ח.פ. 512109968

מספר ספק משרד הביטחון: 83524121

web-site: [www.copa.co.il](http://www.copa.co.il)

e-mail: [copa@copa.co.il](mailto:copa@copa.co.il)

## Specification

| Standard                        | <ul style="list-style-type: none"><li>• IEEE802.3/IEEE802.3u standard</li><li>• Ethernet over VDSL2</li><li>• ITU-T G.993.1/2, SG15Q4 DMT Compliance</li></ul>   |                    |  |                                 |                               |                    |     |    |     |     |    |      |     |    |      |    |    |      |    |    |      |    |    |      |    |    |      |    |    |      |    |    |      |    |    |      |
|---------------------------------|--|--------------------|--|---------------------------------|-------------------------------|--------------------|-----|----|-----|-----|----|------|-----|----|------|----|----|------|----|----|------|----|----|------|----|----|------|----|----|------|----|----|------|----|----|------|
| Interface                       | <ul style="list-style-type: none"><li>• 2 RJ-45 10/100Mbps Ethernet ports</li><li>• 1 BNC Connector for Ethernet over Coaxial cable</li><li>• 4 DIP switch for mode selection</li></ul>  |                    |  |                                 |                               |                    |     |    |     |     |    |      |     |    |      |    |    |      |    |    |      |    |    |      |    |    |      |    |    |      |    |    |      |    |    |      |
| Cable                           | <ul style="list-style-type: none"><li>• RJ-45 (Ethernet): Category 3, 4, 5 UTP/STP</li><li>• BNC (DSL): Coaxial cable</li></ul>  |                    |  |                                 |                               |                    |     |    |     |     |    |      |     |    |      |    |    |      |    |    |      |    |    |      |    |    |      |    |    |      |    |    |      |    |    |      |
| VDSL Transmission               | <ul style="list-style-type: none"><li>• ITU-T G.993.1/2, SG15Q4 DMT Compliance</li><li>• Trellis Code with 1024 DMT bins</li><li>• Max Data Rate: 100/60 Mbps</li></ul>  |                    |  |                                 |                               |                    |     |    |     |     |    |      |     |    |      |    |    |      |    |    |      |    |    |      |    |    |      |    |    |      |    |    |      |    |    |      |
| Network Features                | <ul style="list-style-type: none"><li>• Auto-Detection for 10/100 Base-T and Half/Full duplex</li><li>• High performance bridge for Ethernet extension</li><li>• Fully compatible with IEEE802.3/IEEE802.3u</li><li>• Auto MDIX Function</li></ul>   |                    |  |                                 |                               |                    |     |    |     |     |    |      |     |    |      |    |    |      |    |    |      |    |    |      |    |    |      |    |    |      |    |    |      |    |    |      |
| Data Rate & Distance            | <ul style="list-style-type: none"><li>• Performance in 5C2V Cable at 6dB without rate limit</li></ul> <table><tr><th>Down Stream<br/>Data Rate (Mbps)</th><th>Up Stream<br/>Data Rate (Mbps)</th><th>Distance<br/>(feet)</th></tr><tr><td>100</td><td>60</td><td>500</td></tr><tr><td>100</td><td>58</td><td>1000</td></tr><tr><td>100</td><td>56</td><td>1250</td></tr><tr><td>98</td><td>53</td><td>1500</td></tr><tr><td>96</td><td>50</td><td>1750</td></tr><tr><td>88</td><td>48</td><td>2000</td></tr><tr><td>80</td><td>44</td><td>2500</td></tr><tr><td>75</td><td>35</td><td>3000</td></tr><tr><td>70</td><td>30</td><td>3500</td></tr><tr><td>63</td><td>25</td><td>4000</td></tr></table> |                    |  | Down Stream<br>Data Rate (Mbps) | Up Stream<br>Data Rate (Mbps) | Distance<br>(feet) | 100 | 60 | 500 | 100 | 58 | 1000 | 100 | 56 | 1250 | 98 | 53 | 1500 | 96 | 50 | 1750 | 88 | 48 | 2000 | 80 | 44 | 2500 | 75 | 35 | 3000 | 70 | 30 | 3500 | 63 | 25 | 4000 |
| Down Stream<br>Data Rate (Mbps) | Up Stream<br>Data Rate (Mbps)  | Distance<br>(feet) |  |                                 |                               |                    |     |    |     |     |    |      |     |    |      |    |    |      |    |    |      |    |    |      |    |    |      |    |    |      |    |    |      |    |    |      |
| 100                             | 60   | 500                |  |                                 |                               |                    |     |    |     |     |    |      |     |    |      |    |    |      |    |    |      |    |    |      |    |    |      |    |    |      |    |    |      |    |    |      |
| 100                             | 58   | 1000               |  |                                 |                               |                    |     |    |     |     |    |      |     |    |      |    |    |      |    |    |      |    |    |      |    |    |      |    |    |      |    |    |      |    |    |      |
| 100                             | 56   | 1250               |  |                                 |                               |                    |     |    |     |     |    |      |     |    |      |    |    |      |    |    |      |    |    |      |    |    |      |    |    |      |    |    |      |    |    |      |
| 98                              | 53   | 1500               |  |                                 |                               |                    |     |    |     |     |    |      |     |    |      |    |    |      |    |    |      |    |    |      |    |    |      |    |    |      |    |    |      |    |    |      |
| 96                              | 50   | 1750               |  |                                 |                               |                    |     |    |     |     |    |      |     |    |      |    |    |      |    |    |      |    |    |      |    |    |      |    |    |      |    |    |      |    |    |      |
| 88                              | 48   | 2000               |  |                                 |                               |                    |     |    |     |     |    |      |     |    |      |    |    |      |    |    |      |    |    |      |    |    |      |    |    |      |    |    |      |    |    |      |
| 80                              | 44   | 2500               |  |                                 |                               |                    |     |    |     |     |    |      |     |    |      |    |    |      |    |    |      |    |    |      |    |    |      |    |    |      |    |    |      |    |    |      |
| 75                              | 35   | 3000               |  |                                 |                               |                    |     |    |     |     |    |      |     |    |      |    |    |      |    |    |      |    |    |      |    |    |      |    |    |      |    |    |      |    |    |      |
| 70                              | 30   | 3500               |  |                                 |                               |                    |     |    |     |     |    |      |     |    |      |    |    |      |    |    |      |    |    |      |    |    |      |    |    |      |    |    |      |    |    |      |
| 63                              | 25   | 4000               |  |                                 |                               |                    |     |    |     |     |    |      |     |    |      |    |    |      |    |    |      |    |    |      |    |    |      |    |    |      |    |    |      |    |    |      |
| LED indicators                  | <ul style="list-style-type: none"><li>• <b>POWER:</b> Power is ON</li><li>• <b>BNC:</b> Cable Loop Connection Status</li><li>• <b>LAN1/ LAN2:</b> Data Activity of LAN Port1,2</li><li>• <b>BNC:</b> Cable Loop Connection Status</li><li>• <b>M/S:</b> Master/Slave Selection</li></ul>   |                    |  |                                 |                               |                    |     |    |     |     |    |      |     |    |      |    |    |      |    |    |      |    |    |      |    |    |      |    |    |      |    |    |      |    |    |      |
| Power Supply                    | <ul style="list-style-type: none"><li>• External Power Adapter DC5V/2A</li></ul>   |                    |  |                                 |                               |                    |     |    |     |     |    |      |     |    |      |    |    |      |    |    |      |    |    |      |    |    |      |    |    |      |    |    |      |    |    |      |
| Environment                     | <ul style="list-style-type: none"><li>• Operating Temperature: 0°C~ 40°C</li><li>• Operating Humidity: 10%~90% (Non-Condensing)</li></ul>  |                    |  |                                 |                               |                    |     |    |     |     |    |      |     |    |      |    |    |      |    |    |      |    |    |      |    |    |      |    |    |      |    |    |      |    |    |      |
| Dimension                       | <ul style="list-style-type: none"><li>• 120 * 90 * 28 mm</li></ul>   |                    |  |                                 |                               |                    |     |    |     |     |    |      |     |    |      |    |    |      |    |    |      |    |    |      |    |    |      |    |    |      |    |    |      |    |    |      |
| Certifications                  | <ul style="list-style-type: none"><li>• CE, FCC</li></ul>  |                    |  |                                 |                               |                    |     |    |     |     |    |      |     |    |      |    |    |      |    |    |      |    |    |      |    |    |      |    |    |      |    |    |      |    |    |      |



web-site: [www.copa.co.il](http://www.copa.co.il)  
e-mail: [copa@copa.co.il](mailto:copa@copa.co.il)

כומפניקס תקשורת ואלקטרוניקה בע"מ

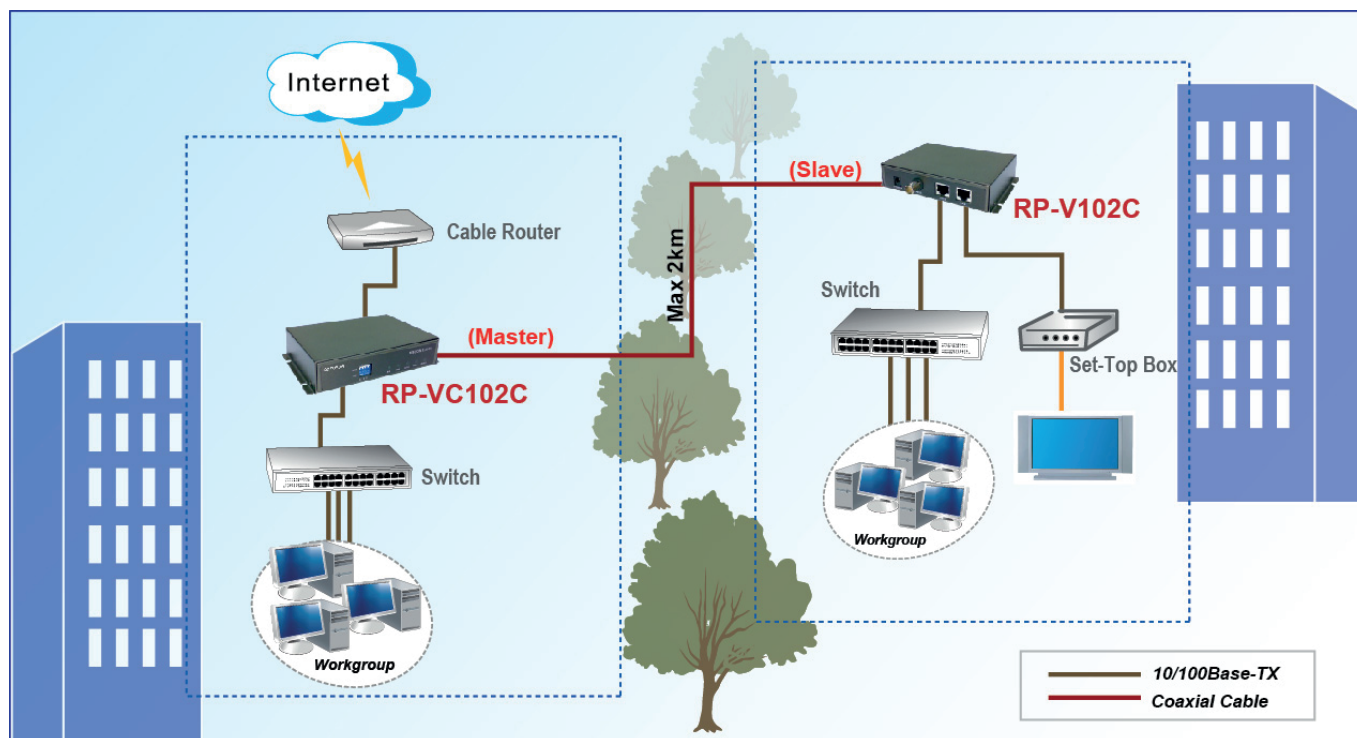
רח' צבי ברגמן 8, סגולה, פתח-תקווה

טל: 03-9049004 פקס: 03-9344497

ח.פ. 512109968

מספר ספק משרד הביטחון: 83524121

## Application



## Ordering information

**RP-VC102C** Coaxial over VDSL2 Converter